

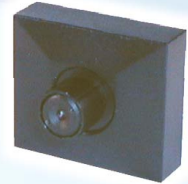
Specification

CCD Body Camera

Item NO.		MS-C428	MS-C429
CCD BODY CAMERA			
Video system.		NTSC/PAL (Color)	
Number of Effective Pixels	PAL	500x528	
	NTSC	510x492	
CCD Image Sensor		1/4" Interline CCD	
Scanning System		2:1 INTERLACE	
Synchronization		INTERNAL	
Resolution (TV Lines)		350	
Minimum Illumination		0.2Lux / F 1.2	
S/N Ratio		more than 48dB	
Electronic Shutter		1/50 - 1/120,000	
Horizontal Sync Frequency		NTSC(EIA)-15.734kHz / PAL(CCIR)-15.625kHz	
Vertical Sync Frequency		NTSC(EIA)-60Hz / PAL(CCIR)-50Hz	
Gamma Consumption		0.45	
Video Output		1Vp-p , 75ohms Composite	
Audio Output		Frequency 20-16000Hz,S/N ratio more than 58dB (Optional)	
Built-IN Lens		3.7mm/F2.0(3C) , 3.1mm/F3.4(3T)	4.0mm/F2.0
Storage Temperature		-30 to 60 Degree C	
Working Temperature		-10 to 45 Degree C	
Power Source		DC 12V(standard)	
Power Current		70mA(max)	
Dimensions (mm)		24x28x10	
Wegiht (g)		10g	



MS-C428-3C



MS-C429-4F

Ordering Information

MODEL	LENS	MIC	NOTE
MS-C428-3C	3.7mm/F2.0		CONE
MS-C428-4C	4.3mm/F2.0		CONE
MS-C428-3T	3.1mm/F3.4		SLIM
MS-C428-4T	3.9mm/F3.9		SLIM
MS-C428-4F	4.0mm/F2.0		FLAT
MS-C429-4F	4.0mm/F2.0		FLAT
MS-C428A-3C	3.7mm/F2.0		CONE
MS-C428A-4C	4.3mm/F2.0		CONE
MS-C428A-3T	3.1mm/F3.4		SLIM
MS-C428A-4T	3.9mm/F3.9		SLIM
MS-C428A-4F	4.0mm/F2.0		FLAT
MS-C429A-4F	4.0mm/F2.0		FLAT

NOTE: MS-C428A: A: W/Microphone

Other mode



MSX-2400B



MSR-A2410B



Transmitter

Receiver

MODEL	MRX-2400B	MRX-1200B	MRX-0900B
Channel Frequency	2413 , 2432 2451 , 2470	1080 , 1120 1160 , 1200	910 , 980 1010 , 1040
Video Input	1 Vp-p Composite Video		
Audio Input	2 Vp-p (max)		
Audio Sub Carrier	5.5MHz		
Operating Voltage	DC 5 V		
Power Current	360mA		
Batter Charge Time	2.5Hrs		
Operating Temperature	-10~40 Degree C		
Operating Humidity	20~80%		
Dimensions	110mmx67mmx21.5mm		
Weight	117g		

MODEL	TXT-AB2	TXT-AB6	TXT-BB1	TXT-BB5
Channel Frequency	2413,2432,2451,2470 (MHz)		1080,1120,1160,1200 (MHz)	
Frequency Deviation	200kHz			
RF Output Power	200mW	600mW	100mW	500mW
Video Input	1 Vp-p75 ohms Composite			
Audio Input	2 Vp-p (max)			
Audio Sub Carrier	5.5MHz			
Charge Voltage	DC 9 V			
Charge Current	800mA			
Output Voltage	DC 12V			
Output Current	400mA(max)			
Capacity	900mAh(DC 9V)			
Operating Temperature	-10~40 Degree C			
Operating Humidity	20~80%			
Dimension (mm)	55x70x15	55x86x20	55x70x15	55x86x20

MODEL	MSR-A2410B	MSR-B1210B	MSR-C0910B
Channel Frequency	2413 , 2432 2451 , 2470	1080 , 1120 1160 , 1200	910 , 980 1010 , 1040
Video Input	1 Vp-p Composite Video		
Audio Input	2 Vp-p (max)		
Audio Sub Carrier	5.5MHz		
Operating Voltage	DC 12 V		
Power Current	380mA		
Batter Charge Time	2.5Hrs		
Operating Temperature	-10~40 Degree C		
Operating Humidity	20~80%		
Dimensions	21mmx80mmx125mm		
Weight	165g		

Other type



HS-C123



HS-C131