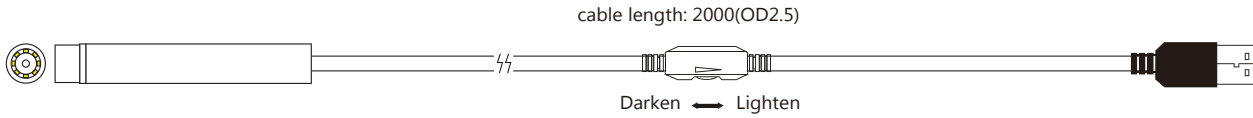


unit:±0.5mm



4 types connector - order in advance



USB A type



Mini USB B type

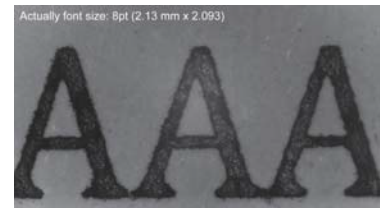


Micro USB B type



USB type C

Image demo



Specification

Model	MD-V31116XL-3025	FMD-V31116XL-3025
Snapshot & Freeze Function	N/A	Support
Camera Parameter Setting On Smartphone	Support	Support
Dimension (mm)	Ø16	
Max. Frame Rate	1920x1080 @ 15~30fps MJPEG 1280x720 960x540 848x480 640x480 640x360 424x240 320x240 320x180 176x144 160x120	
Pixel Size (µm)	1.4 x 1.4	
Image Sensor	1/6" Digital CMOS B/W Camera Module	
Image Area	2.7288x1.5498mm	
Scan Mode	progressive	
Sensitivity	553 mV/(Lux-sec)	
Dynamic Range	73.3 dB @ 15.5x gain	
Uvc Format	MJPEG	
Storage Temperature	-30 to 60 Degree C	
Working Temperature	-10 to 45 Degree C	
Interface	USB 2.0 (Compliant with USB Video Class 1.1 standard)	
Lens	30.0 mm / F 2.5	
Focus Distance (FID)	90mm	
View Angle	H= 5° 12'; V= 2° 58'; D= 5° 59'	
LED	white LED x 8	
Power Source	DC 5V (USB)	
Power Current	160mA	
Operating System	Windows XP, windows Vista, window 7, windows 8, windows 10, Linux, MAC OSX	